

HANDHELD LASER WELDING MACHINE

1000W

1500W

2000W

New appearance design



PRODUCT DESCRIPTION

1. Machinery in the laser equipment industry, fill the gap in manual welding
2. Simple operation, beautiful welding beam, welding speed, no consumables
3. Welding stainless steel sheet, iron sheet, galvanized sheet, iron sheet and other metal materials, which can completely replace traditional argon arc welding, electric welding and other processes
4. It can be widely used in cabinets, kitchens, stairs, elevators, frames, ovens, stainless steel, steel door and window railings, distribution boxes, stainless steel homes, complex irregular welding, etc.

PRODUCT PARAMETER

Brand	Optic
product name	Handheld laser welding machine
Laser power	1000W 1500W 2000W
Laser source	IPG / RAYCUS / JPT / MAX
Welding head	Swing head/normal head
cooling system	Water cooling
Laser type	Fiber laser source
Adjustable power	5%—100%
power supply	220V/50/60HZ;380/50/60HZ
Laser wavelength	1064nm, 1064nm
Dimensions	1200x800x1480mm
warranty period	2 years
weight	280 KG

Advantages of laser welding swing head

1. The process that the conventional head cannot complete, the jitter head only needs to use about 70% of the power, so the cost of the laser can be saved;
 2. Through the galvanometer motor weaving back and forth, so that there are a lot of impurities in the bubbles can reduce bubbles, frying, splashing, etc.
 3. In the case of irregular gaps, the requirements for fixtures can be reduced.
- The welding gap of the conventional oscillatory joint is usually 0.2 mm, and the light directly exceeding this width passes through. The width of the welding gap of the swing head can reach 0.5mm, but the traditional welding head can only be welded to 0.2mm. There is no welding head of the galvanometer motor inside, so there is no swing. The welding effect is not good, and the welding process is limited.

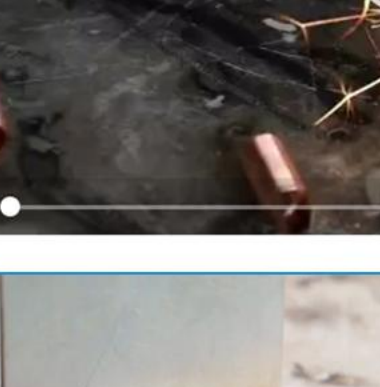
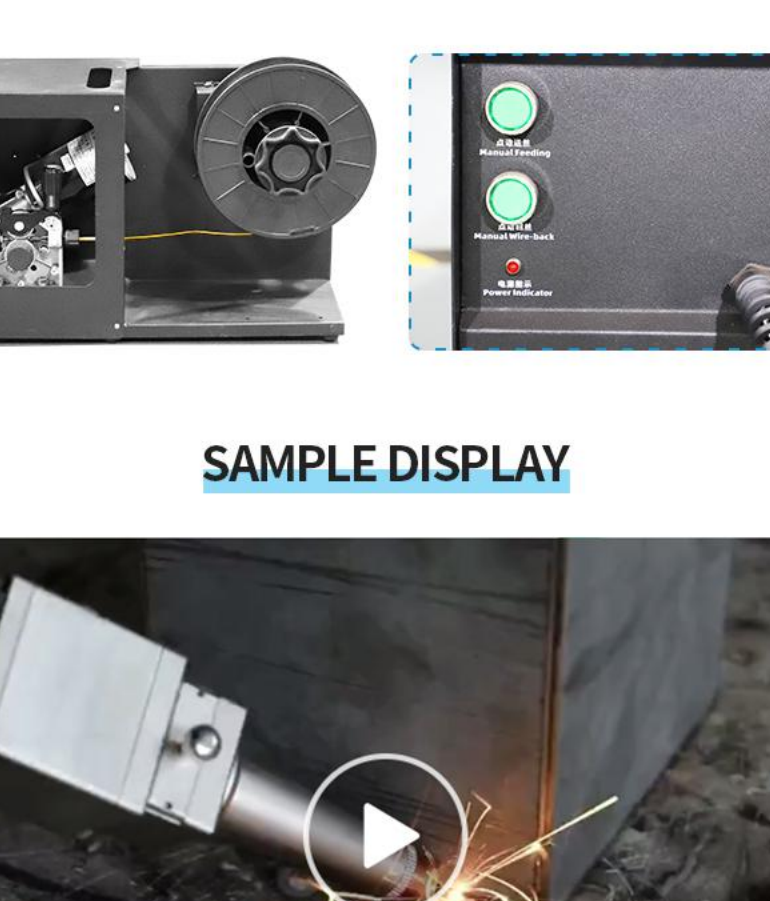
INTERNAL DISPLAY



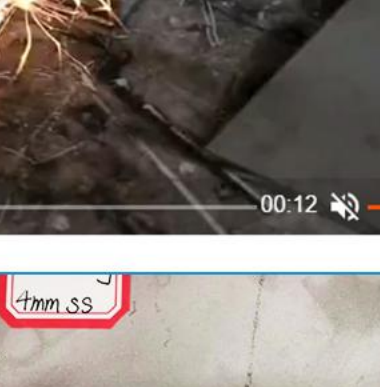
control panel
The operation is simple and clear, and the system supports multiple languages



wobble welding head
The portable welding joint is light, flexible and easy to operate. It can be used for continuous welding of various angles and positions



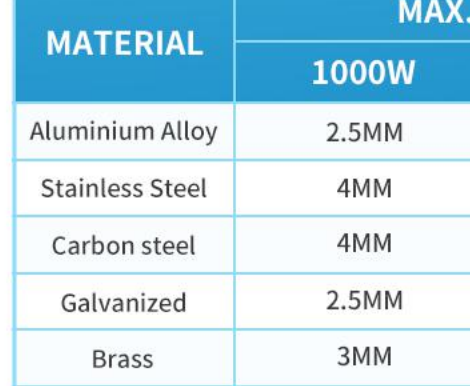
laser source
Compared with similar products, the light laser has a higher photoelectric performance conversion ability; a more stable beam, and a stronger anti-reflection ability.



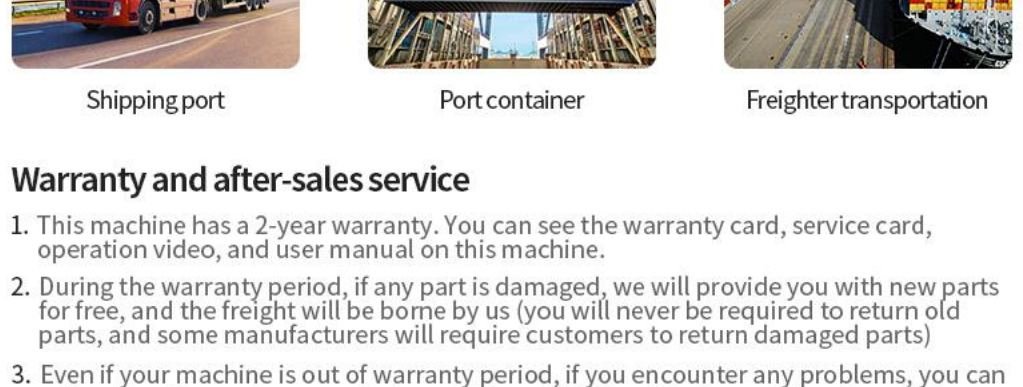
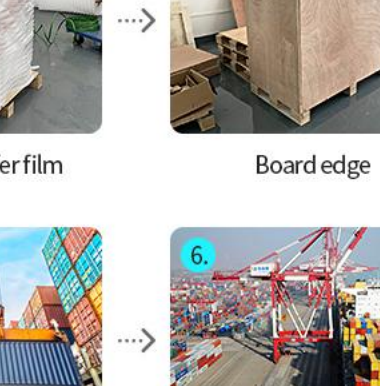
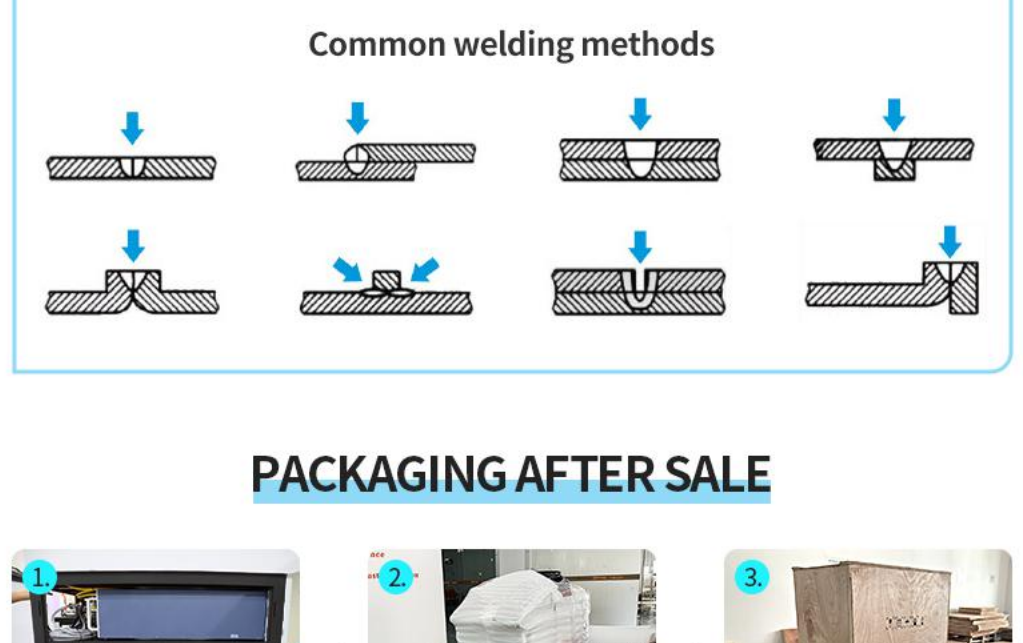
Water Chiller
The chiller provides a good cooling system for the laser source and welding head. It can protect the source and welding head for long working hours a day, up to 10 hours a day. It can also help you save more layout space and transportation costs.

Option (wire feeder)

This is the wire feeder of the fiber hand-held laser welding machine. There are 0.8mm, 1.0mm and 1.2mm diameters of welding wire to choose from. The standard is a machine with a wire diameter of 1.0 mm.



SAMPLE DISPLAY



MATERIAL	MAX. WELDING THICKNESS		
	1000W	1500W	2000W
Aluminium Alloy	2.5MM	3MM	4MM
Stainless Steel	4MM	5MM	6MM
Carbon steel	4MM	5MM	6MM
Galvanized	2.5MM	3MM	4MM
Brass	3MM	3.5MM	4MM
Mild Steel	4MM	5MM	6MM
Iron	4MM	5MM	6MM

Common welding methods



PACKAGING AFTER SALE



Warranty and after-sales service

1. This machine has a 2-year warranty. You can see the warranty card, service card, operation video, and user manual on this machine.
2. During the warranty period, if any part is damaged, we will provide you with new parts for free, and the freight will be borne by us (you will never be required to return old parts, and some manufacturers will require customers to return damaged parts)
3. Even if your machine is out of warranty period, if you encounter any problems, you can call our service center or contact your sales staff. We will help you solve the problem within 12 hours. We have a team of after-sales engineers in English, Japanese, and Russian, and we can provide support services that small factories cannot provide.

ABOUT US



WHY CHOOSE US

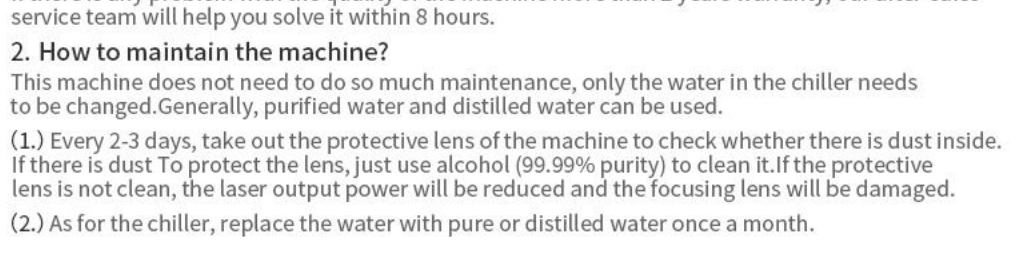
Optical Technology (Shenzhen) Co., Ltd. is a comprehensive enterprise integrating R&D, design and production. Product laser automation equipment manufacturer. Our products include laser cutting machines, marking machines, laser welding machines, laser engraving machines and non-standard automation equipment.

Our company has a group of high-level optical, electronic and precision mechanical researchers, and has world-class optical and micro-electronic test equipment, advanced quality management system, improve the efficiency of the manufacturing test process, and create excellent quality.

Our commitment is to focus on product quality and customer service through research and continuous improvement of technical level, development, standardization, and scientific management.

Optical Technology (Shenzhen) Co., Ltd. has won a good reputation in Germany, the United States, Japan, the United Kingdom, Russia, Malaysia and other countries.

Optical Technology (Shenzhen) Co., Ltd. has established a long-term friendly cooperative relationship with domestic laser research institutes. Over the years, our products have been exported to more than one hundred countries and regions.



www.opticlaser.net

Optic Technology(Shenzhen) Co., Ltd

Tel : +86-755-23196457

Phone : +86-13827459505

E-mail : manager@optic-tech.cn